

CURB STOP TESTING

Product Code 6CSLP, 6' long, 2 pieces of #3 reinforcement in each

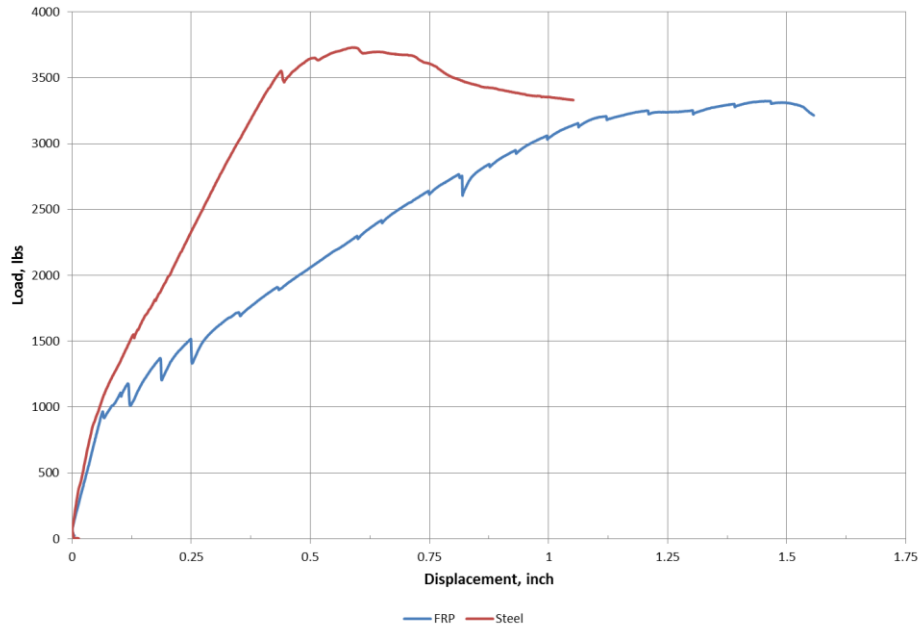
Steel Curb Stop

- Max Load → 3,730 lbs
- Deflection at Load → 0.595 inch
- Spring back → 16%

FRP Curb Stop

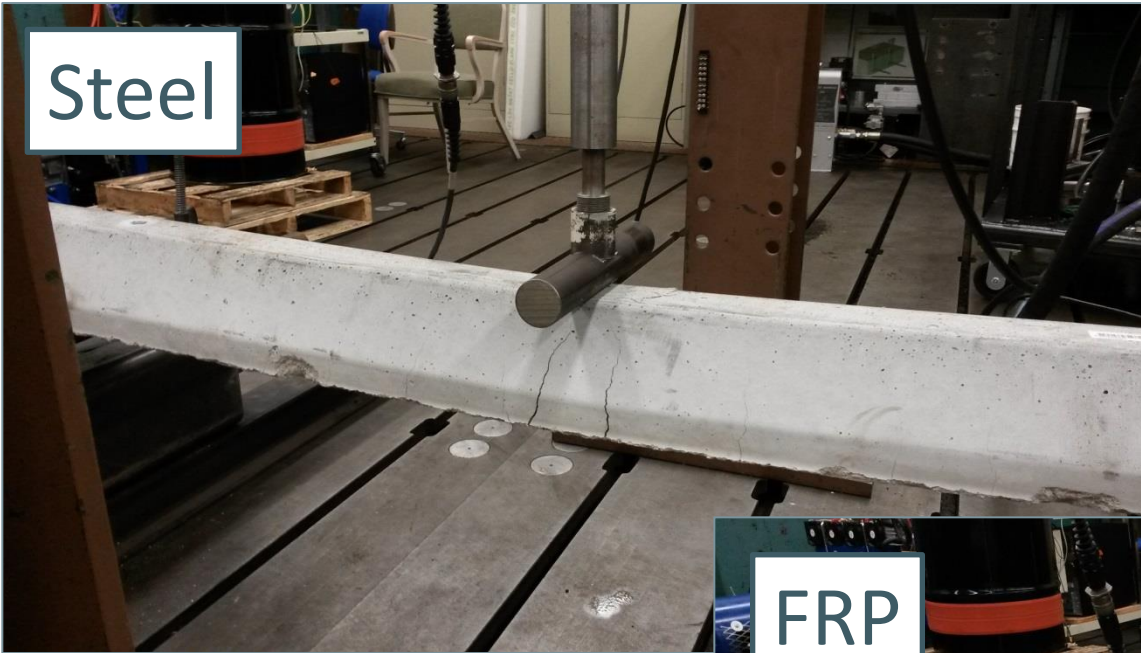
- Max Load → 3,320 lbs
- Deflection at Load → 1.45 inch
- **Spring back → 72%**

FRP vs. Steel Curb Stop Testing



CURB STOP TESTING

Steel



Steel

- Fewer but larger width cracks
- Remain open crack when removed

FRP



FRP

- More, smaller width cracks
- Cracks close up when load removed